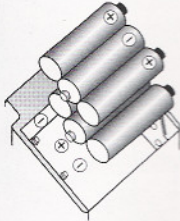


## Installing the Batteries

### LaserChalkLine

1. Loosen thumbscrews.
2. Remove laser housing from wallmount.
3. Flip Laser housing up-side down and remove battery lid.
4. Replace batteries.

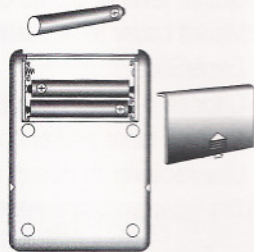


Important: Make sure both rows are installed according to diagram inside battery compartment. Improper installation will cause batteries to leak.

5. Replace lid and secure laser housing to wallmount using thumbscrews.

### Electronic Receiver

1. From the back of the receiver, remove battery lid.
2. Remove old batteries and replace with 3 AAA alkaline batteries.



### Bump Sensor

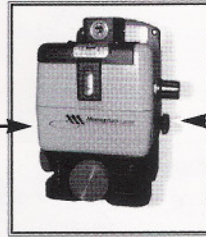
1. From the back of the Bump Sensor, remove battery lid.
2. Remove old battery and replace with 9 volt alkaline battery.



## Choose a Level or Plumb Orientation

1. Choose level or plumb orientation according to the application being used for.

### LEVEL



Loosen small black thumb screws, located on either side.

### CHANGING BETWEEN LEVEL AND PLUMB



Remove and turn the laser on its back.

### PLUMB

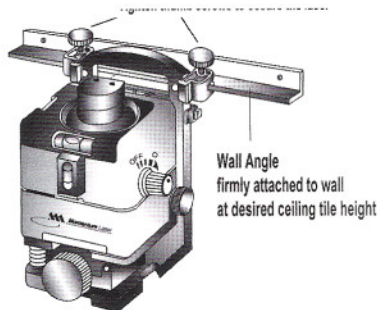
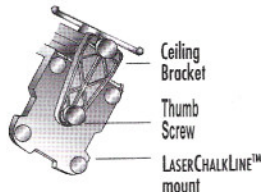


Tighten thumbscrews.

## Mounting the Laser:

Acoustical ceiling bracket.

1. Attach the bracket to the LaserChalkLine mount under side with the threaded knob.
2. Attach the bracket with the mounted laser to the wall angle and adjust to the desired height using the quick release button.



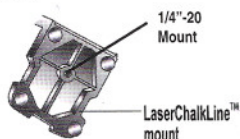
## Mounting on a tripod

1. Secure your laser to the tripod base by screwing the threaded knob on the tripod to the threaded mount on the laser. The mount includes both 1/4"-20 and 5/8" threads.
2. Place the tripod/laser at a desired location on stable footing, at the desired height.
3. Follow the directions for leveling or plumbing the laser.
4. Turn on your laser.



## Mounting on a Laser Slide

1. Secure your laser to the Laser Slide by screwing the threaded knob on the laser platform to the threaded mount on the laser.
2. Adjust the laser to the desired height using the hash marks on the LaserSlide.
3. Level your laser once placed at its desired height and position.
4. Turn on your laser.

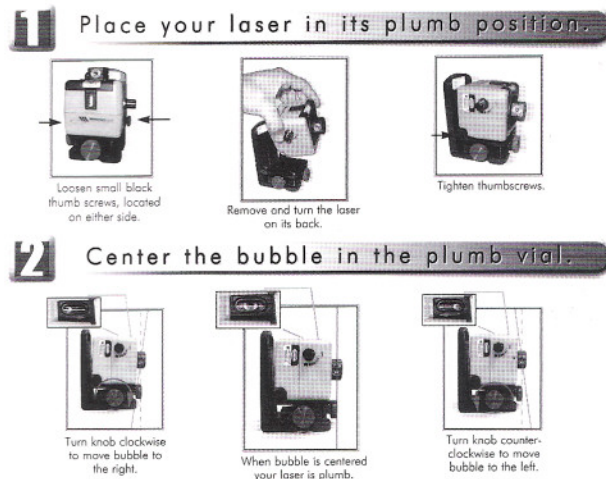


## Leveling and Plumbing the Laser

### Projecting a Level Plane



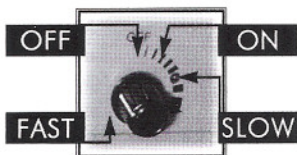
### Projecting a Plumb Plane



## Turn on the Laser and Select Rotation Speed

1. Turn Your laser on and select rotation speed according to the diagram below.

Turn the knob clockwise to turn on the laser, the more you turn it the faster the laser rotates.



When the laser is rotating it generates a level plane of highly visible light which is represented graphically by the concentric red circles. The Faster the rotation the more solid the line appears, the slower the rotation the brighter the line appears.

