

## Room design and interior furnishings

### SuperLine 2D



**Line laser for aligning work on all surfaces**

- Accuracy 1 mm / 1 m
- The rotatable angle scale means that the device and the graduated collar can be set separately to any angle.
- Powerful adhesion magnets facilitate attachment to magnetic surfaces
- Illuminated vial

**Optional:** Fastening also possible with ConTacts adhesive strips.



**Inclusive:** SuperLine 2D, batteries

ORDER NO.	EAN-CODE	PU
081.110A	4 021563 662579	5

**PT**



### ConTacts (1)



**Super contact strips**

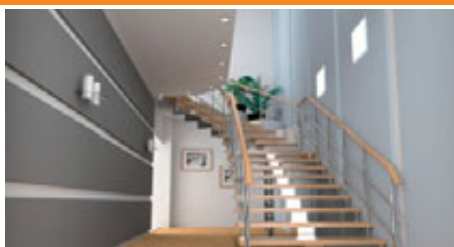
- For a secure fixing on all surfaces
- Can be removed without a trace, many options for use



ORDER NO.	EAN-CODE	PU
081.101A	4 021563 662883	20

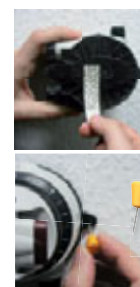
**PT**

### SuperLine 3D



**Line laser for aligning work on all surfaces**

- Extremely bright laser
- Accuracy 0.8 mm / 1 m
- Round-the-corner alignment in one work step thanks to 3D fine adjustment
- 3 vials and special line lens
- The line laser can be secured on all surfaces with the enclosed adhesive strips and fixing pins
- The MicroControl button allows rapid and exact fine alignment of the laser.
- The rotatable housing and degree scale enable setting to any angle.

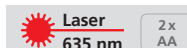


**Inclusive:** SuperLine 3D, ConTacts, pins, batteries



ORDER NO.	EAN-CODE	PU
081.100A	4 021563 661398	5

**PT**



### SuperSquare-Laser



**90° laser lines make this the ideal measuring tool for all floor-based alignment work**

- Angle accuracy 0.05°, accuracy of vertical laser lines 0.5 mm / 1 m
- The wide-range laser beams also project easily visible laser lines onto walls.
- The two vials facilitate vertical levelling on walls.
- The 90° try-square edge makes it easy to align the first floor tile.
- Built-in levelling feet
- Illuminated vial
- 1/4"-tripod connection



**Inclusive:** SuperSquare-Laser, laser enhancement glasses, carrying case, batteries

ORDER NO.	EAN-CODE	PU
081.130A	4 021563 662760	5

**PT**



**HARD**