

# GeoDist®



- DE Gebrauchsanweisung
- EN User Manual
- FR Manuel d'utilisation
- IT Manuale d'uso
- ES Manual de usuario
- RU Руководство пользователя
- PL Instrukcja obsługi
- DA Brugervejledning
- NL Gebruiksaanwijzing
- SV Handbok



## Table of Contents

<b>Instrument Set-up</b> .....	<b>-2</b>	<b>Warranty</b> .....	<b>-14</b>
Introduction .....	-2	<b>Safety Instructions</b> .....	<b>-14</b>
Overview .....	-2	Symbols used .....	-14
Display .....	-3	Permitted use .....	-15
Insert batteries .....	-3	Prohibited use .....	-15
<b>Operations</b> .....	<b>-4</b>	Hazards in use .....	-15
Switching ON/OFF .....	-4	Limits of use .....	-15
Clear .....	-4	Areas of responsibility .....	-15
Message Codes .....	-4	Electromagnetic Compatibility (EMC) .....	-15
Beep ON/OFF .....	-4	FCC statement (applicable in U.S.) .....	-16
Illumination ON/OFF .....	-4	Laser classification .....	-16
Adjusting measuring reference / tripod .....	-5	Labelling .....	-16
Multifunctional endpiece .....	-5		
Unit setting .....	-5		
<b>Measuring Functions</b> .....	<b>-6</b>		
Measuring single distance .....	-6		
Permanent / Minimum-Maximum measuring .....	-6		
Add / Subtract .....	-6		
Area .....	-7		
Volume .....	-8		
Pythagoras (2-point) .....	-9		
Pythagoras (3-point) .....	-9		
Pythagoras (partial height) .....	-10		
Stake out .....	-11		
Memory (last 10 values) .....	-12		
Delete Memory .....	-12		
<b>Technical Data</b> .....	<b>-13</b>		
<b>Message Codes</b> .....	<b>-14</b>		
<b>Care</b> .....	<b>-14</b>		
<b>Disposal</b> .....	<b>-14</b>		

### Introduction

-  The safety instructions and the user manual should be read through carefully before the product is used for the first time.
-  The person responsible for the product must ensure that all users understand these directions and adhere to them.


The symbols used have the following meanings:

#### **WARNING**

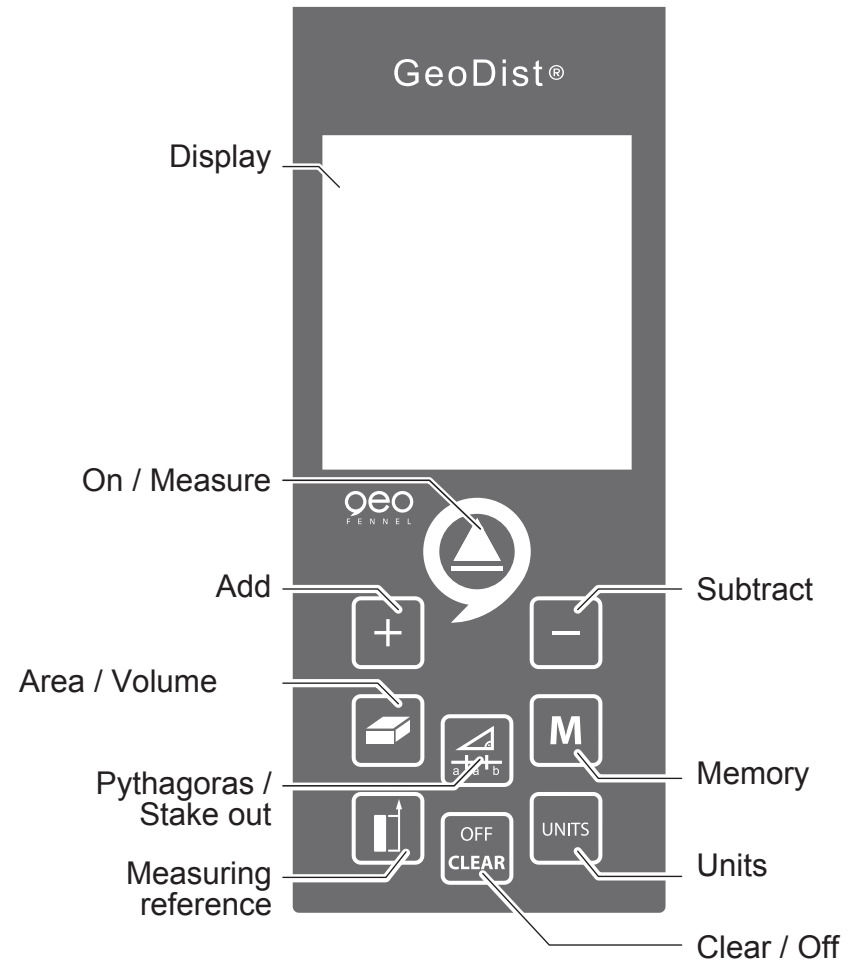
Indicates a potentially hazardous situation or an unintended use which, if not avoided, will result in death or serious injury.

#### **CAUTION**

Indicates a potentially hazardous situation or an unintended use which, if not avoided, may result in minor injury and/or appreciable material, financial and environmental damage.

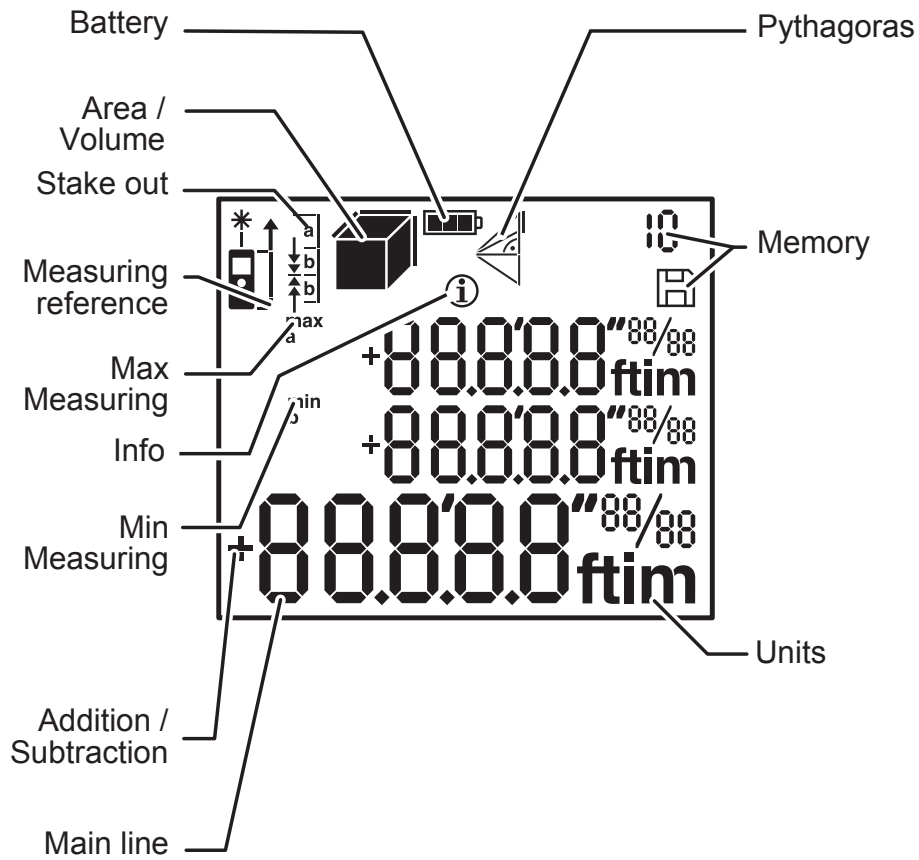
-  Important paragraphs which must be adhered to in practice as they enable the product to be used in a technically correct and efficient manner.

### Overview

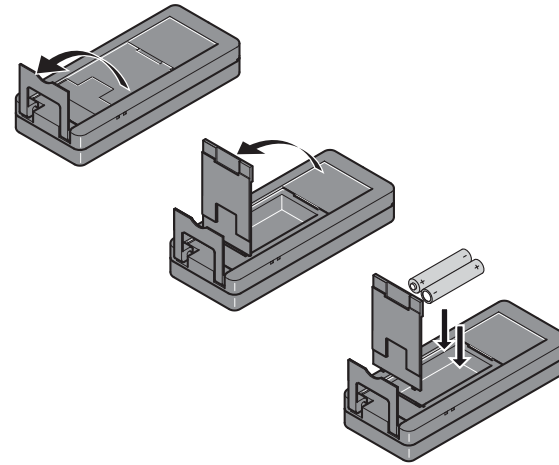


# Instrument Set-up

## Display

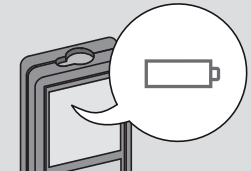


## Insert batteries



**i**

To ensure a reliable use, do not use zinc-carbon batteries. Change batteries when battery symbol is flashing.



### Switching ON/OFF



2 sec

Device is turned OFF.

i

If no key is pressed for 180 sec, the device switches off automatically.

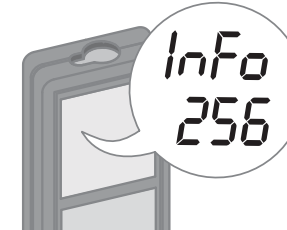
### Clear



Undo last action.

### Message Codes

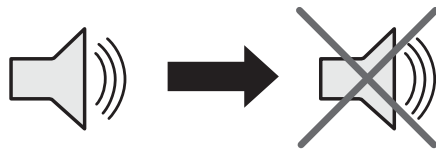
If the message InFo appears with a number, observe the instructions in "Message Codes" section.  
Example:



### Beep ON/OFF



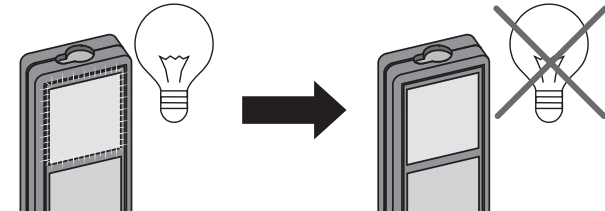
2 sec  
simultaneously



### Illumination ON/OFF



2 sec  
simultaneously



# Operations

## Adjusting measuring reference / tripod

1

Distance is measured from the front of the device.

i Press button 2 sec and reference from front is set permanently.

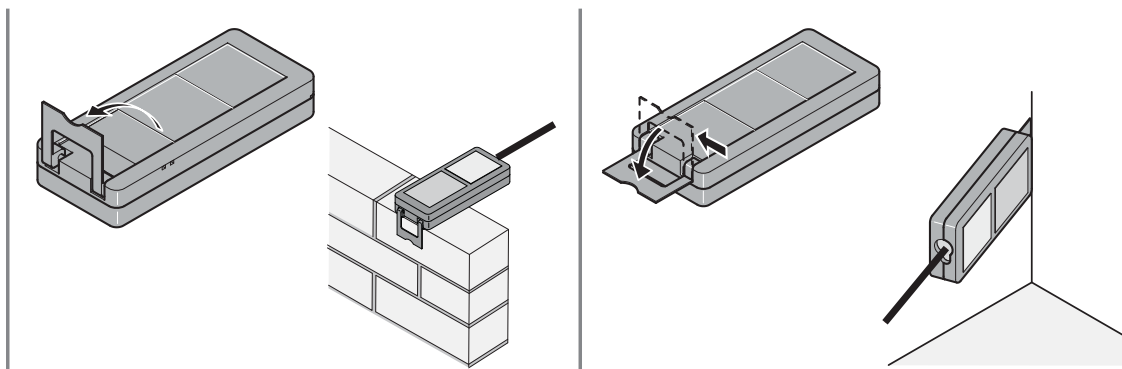
2

Distance is measured from the tripod thread permanently.

3

Distance is measured from the rear of the device (standard setting).

## Multifunctional endpiece



i The orientation of the endpiece is automatically detected and the zero point is adjusted accordingly.

## Unit setting

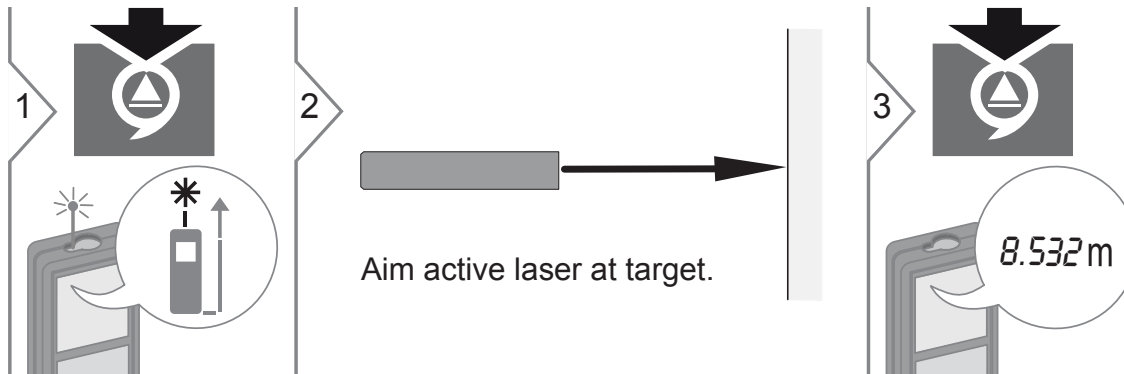


Switch between the following units:

0.000 m	0.00 ft
0.0000 m	0'00" 1/32
0.00 m	0.00 in
	0 in 1/32

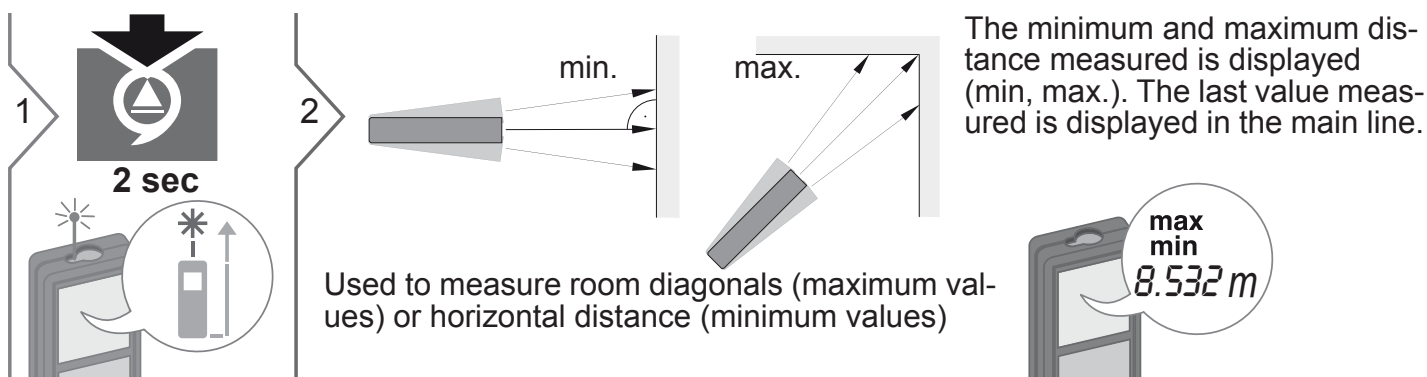
## EN Measuring Functions

### Measuring single distance



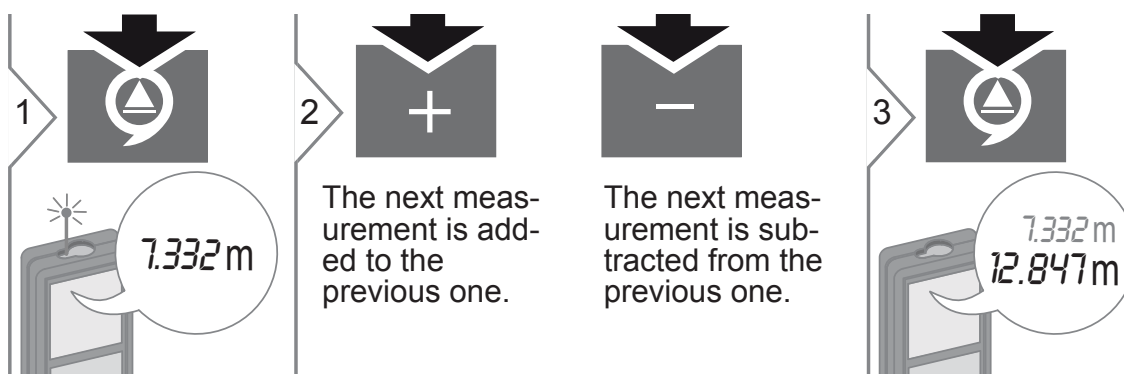
**i** Target surfaces: Measuring errors can occur when measuring to colourless liquids, glass, styrofoam or semi-permeable surfaces or when aiming at high gloss surfaces. Against dark surfaces the measuring time increases.

### Permanent / Minimum-Maximum measuring



**3** Stops permanent / minimum-maximum measuring.

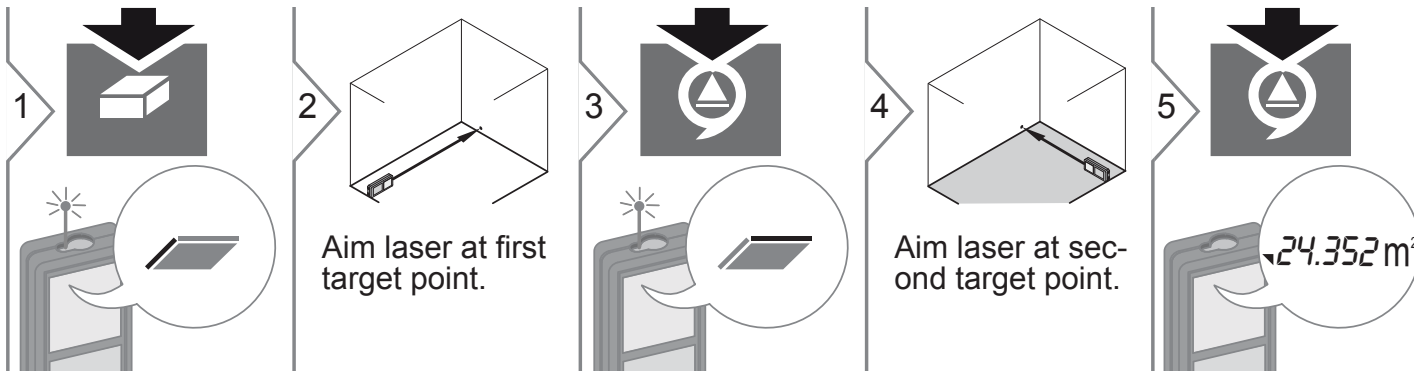
### Add / Subtract



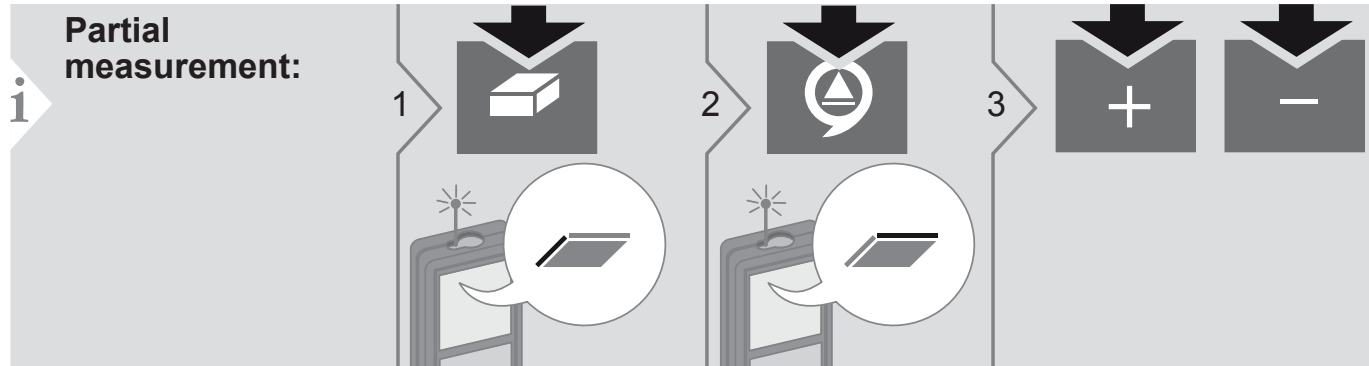
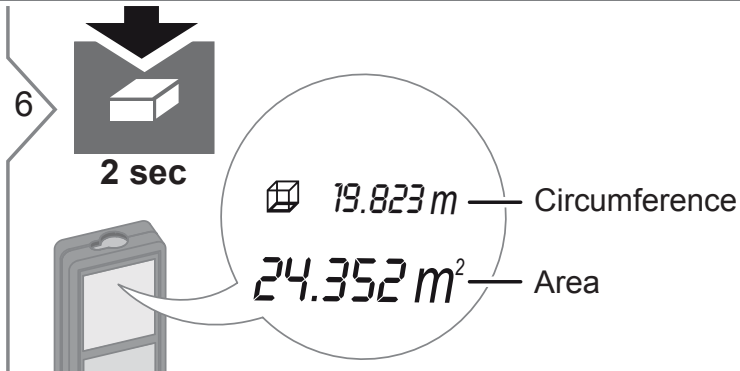
**i** This process can be repeated as required. The result is shown in the main line and the measured value above. The same process can be used for adding or subtracting areas or volumes.

# Measuring Functions

## Area



**i** The result is shown in the main line and the measured distance above.



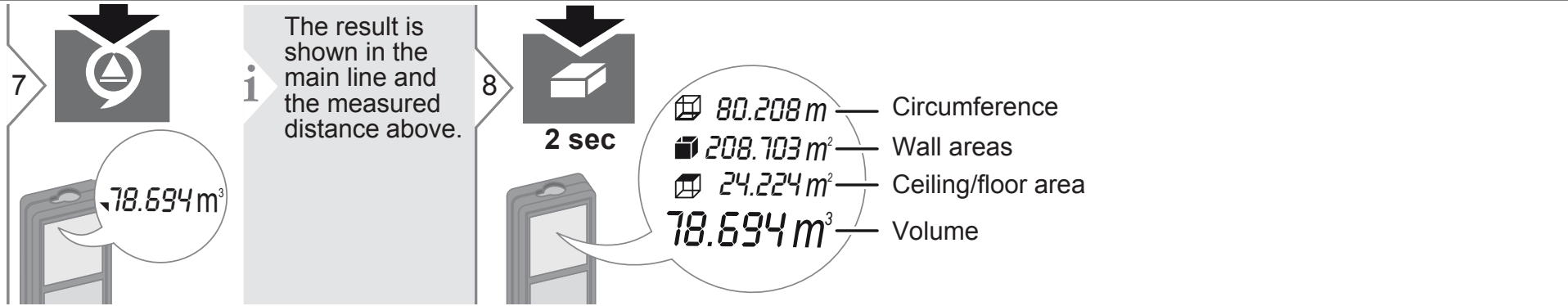
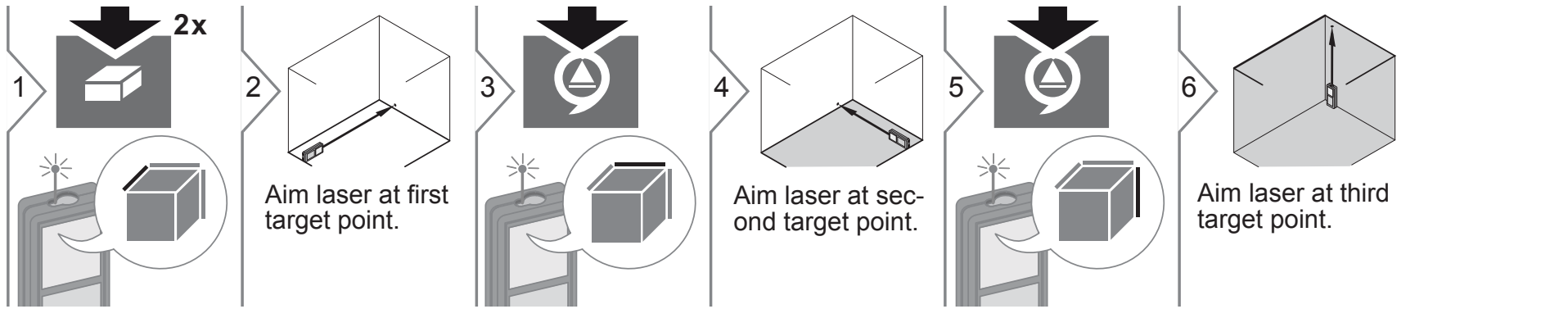
**i** Partial measurement:

Press + or - after starting the first measurement. Measure and add or subtract distances.  
Finish with .  
Measure 2nd length.




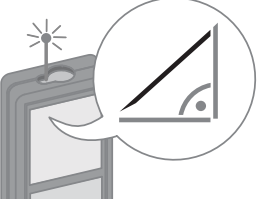
# EN Measuring Functions

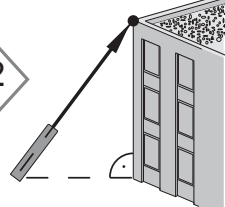
## Volume


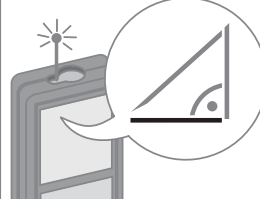


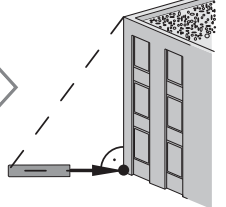
# Measuring Functions


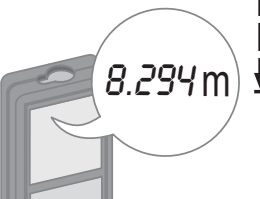
## Pythagoras (2-point)


1  

2  Aim laser at upper point.



3  

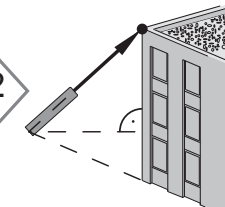
4  Aim laser rectangular at lower point.


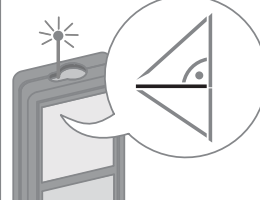
5   8.294 m

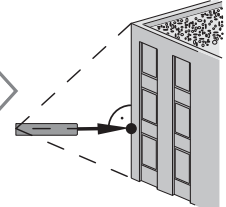
 Notice additional Pythagoras measurement information at the bottom of the next page.


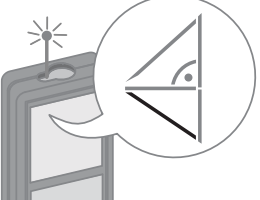
## Pythagoras (3-point)

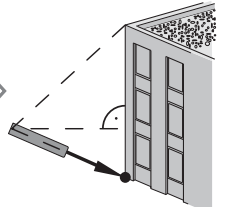
1  2x 



2  Aim laser at upper point.


3  

4  Aim laser at rectangular point.

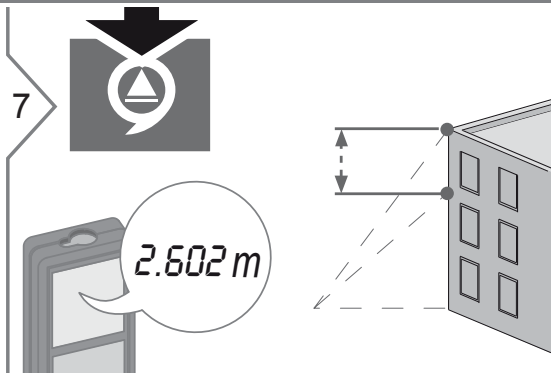
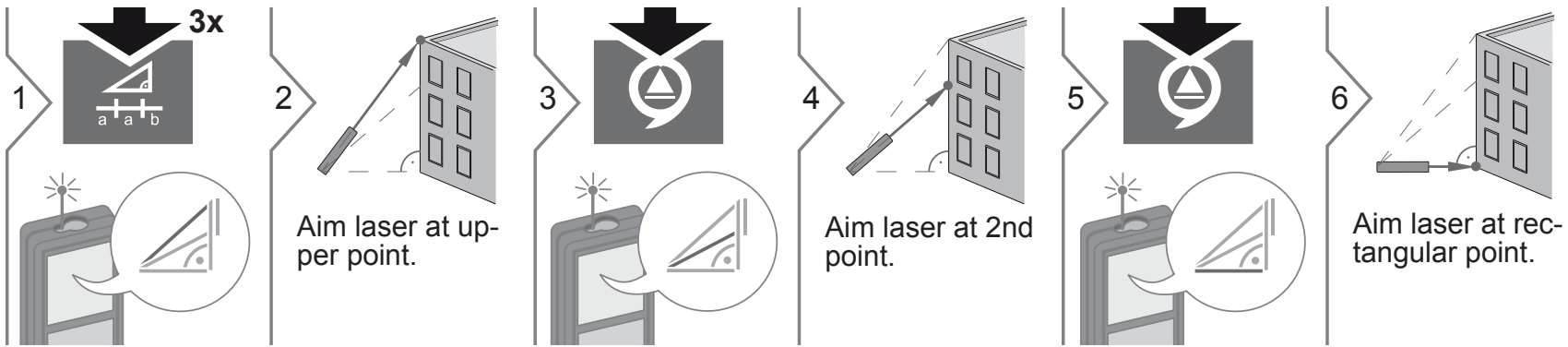
5  

6  Aim laser at lower point.

7   8.294 m

 Notice additional Pythagoras measurement information at the bottom of the next page.

Pythagoras (partial height)



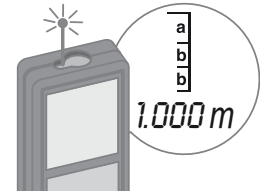
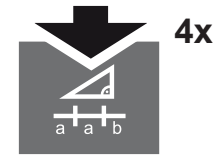
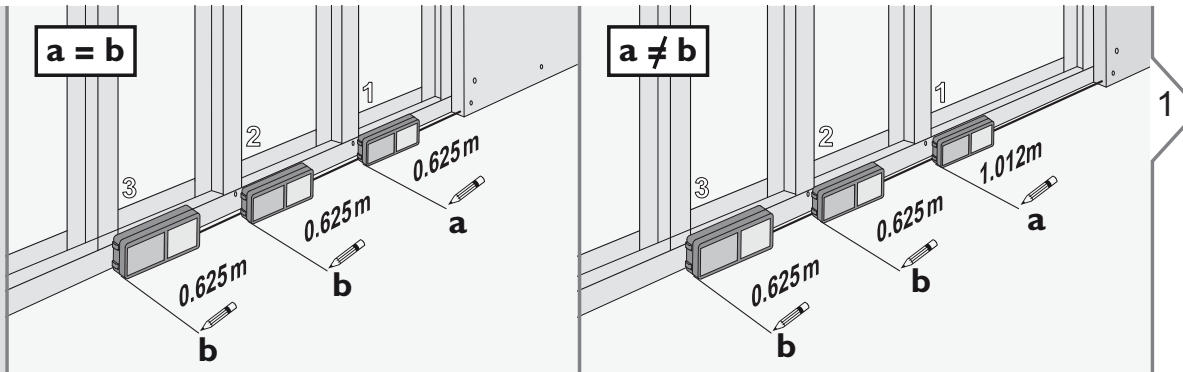
**Pythagoras measurements:**

- The result is shown in the main line and the measured distance above.
- A reduced level of accuracy, lower than the level of accuracy of the instrument itself, must generally be expected when the Pythagoras measuring method is used. In order to obtain the best results we recommend to use a tripod or to flip out the corner end piece.
- Pressing the measuring key for 2 sec in the function activates automatically Minimum or Maximum measurement.

# Measuring Functions

## Stake out

**i** Two different distances (a and b) can be entered to mark off defined measured lengths.



**2**

Adjust value "a".

**3**

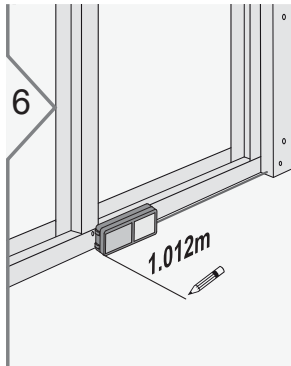
Approve value "a".

**4**

Adjust value "b".

**5**

Approve value "b" and start measurement.




Move device slowly along the stake-out line. The distance to the next stake out point is displayed.

**i** When approaching a stake out point to less than 0.1 m the instrument starts to beep. The function can be stopped by pressing the CLEAR/OFF button.

# EN Measuring Functions

## Memory (last 10 values)


1



1...10  
8.294 m

Last 10 values are displayed.


2



1...10  
8.294 m

Navigates back through last 10 values.

3



2 sec

Value is ready to use for further calculations.

## Delete Memory

1



2 sec  
simultaneously

Memory is completely deleted.