

AC-tiveFinder



DE 02

GB 06

NL 10

DK 14

FR 18

ES 22

IT 26

PL 30

FI 34

PT 38

SE 42

NO 46

TR 50

RU 54

UA 58

CZ 62

EE 66

LV 70

LT 74

RO 78

BG 82

GR 86

Laserliner®
Innovation in Tools

! Read the operating instructions and the enclosed brochure „Guarantee and additional notices“ completely. Follow the instructions they contain. Safely keep these documents for future reference.

Function/Application

Contactless test device for localising electrical voltage (230 V AC) in cables, sockets, lampholders and fuses. Visual and acoustic signals indicate whether a voltage is present. The device features a ZOOM function for increased sensitivity (24 V AC to 1000 V AC) and a built-in battery lamp.

Safety instructions

- In overvoltage category III (CAT III), the voltage between the test device and earth must not exceed 1000 V.
 - Do not use the device in environments in which there are conductive particles or where the occurrence of moisture (in the form of condensation, for example) can create transient conductivity.
 - Do not expose the device to mechanical stress, extreme temperatures or significant vibration.
 - Do not expose the device to moisture or liquids. When using the device outdoors, make sure that the weather conditions are appropriate and/or that suitable protection measures are taken.
 - Please ensure compliance with the safety regulations set out by local and national authorities with regard to the correct and proper use of the device.
-

Symbols



Warning about hazardous electrical voltage: Unprotected live components inside the device housing are capable of posing a risk of electric shock.

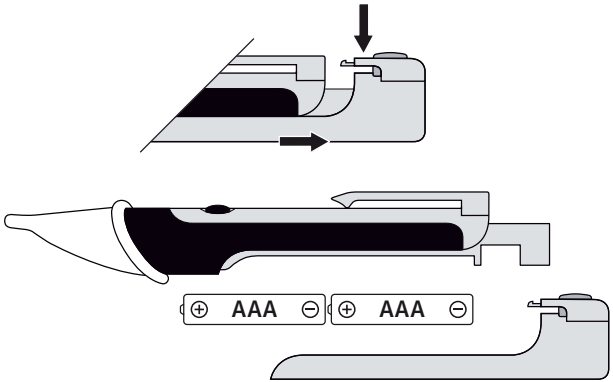


Protection class II: The test device has reinforced or double insulation.

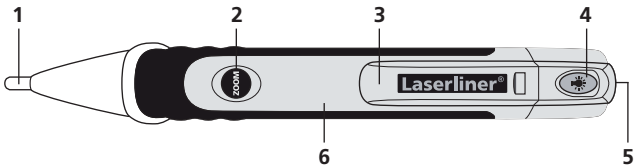
CAT III

Overvoltage category III: Equipment in fixed installations and for applications where specific requirements with regard to the reliability and availability of equipment have to be met, e.g. circuit-breakers in fixed installations and devices used in industrial applications which are permanently connected to the fixed installation.

1 Insertion of batteries



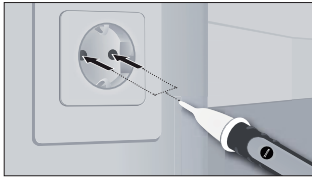
! The device is ready for use immediately once the batteries have been inserted. It does not have a separate ON/OFF switch and is therefore always active.



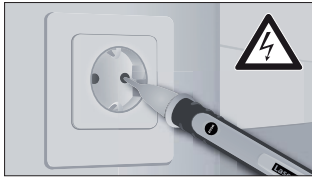
- | | | | | | |
|---|----------------------|---|---------------------|---|---|
| 1 | Detector tip | 3 | Pocket clip | 5 | Battery lamp |
| 2 | ZOOM function ON/OFF | 4 | Battery lamp ON/OFF | 6 | Battery compartment on the rear of the device |

! Before using the device, you should always test it on a main circuit you know to be operational within the specified voltage range. To avoid inaccurate measurements, check the device batteries prior to use by switching on the built-in battery lamp (see 4).

2 Localising electrical voltages



Position the detector tip in the area to be tested (e.g. cable, socket. etc.).

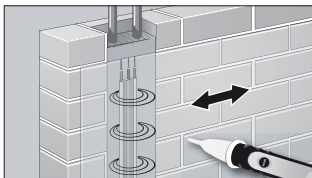


If voltage is present, the detector tip lights up and a signal sounds.

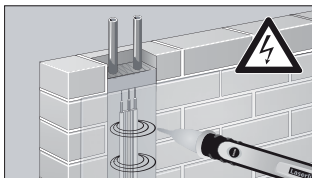
! For safety, check all three phase conductors (L1, L2, L3) for the presence of voltage!

! If the acoustic signal is weak or the battery lamp is not as bright as it should be, replace the batteries.

3 ZOOM function



Press the ZOOM button to increase the sensitivity of the device (24 V AC to 1000 V AC). This enables voltage fields to be located at significant distance by moving the device over the area to be tested.



If voltage is present, the detector tip lights up and a signal sounds.

! Please be aware that even if a visual signal is not displayed, voltage may still be present. Differences in the design of the connection socket or the nature of the insulation (thickness and type) can affect functionality. Voltage cannot be detected behind panels and metal covers.

4 Battery lamp

To switch on the battery lamp, press and hold down button 4. The light switches itself off automatically as soon as the button is released.

Technical data	
Indicator	LED
Voltage range	24 V AC ~ 1000 V AC Frequency 50 ... 60 Hz
Overtoltage category	CAT III - 1000V (non-condensing) Pollution degree 2
Dimensions (W x H x D)	158 x 21 x 25 mm
Battery	2 x 1.5 AAA (NEDA 24A/IEC LR 03)
Operating temperature	-10°C ... 50°C
Weight	48 g

Subject to technical alterations. 06.2010

EU directives and disposal

This device complies with all necessary standards for the free movement of goods within the EU.

This product is an electric device and must be collected separately for disposal according to the European Directive on waste electrical and electronic equipment.

Further safety and supplementary notices at:
www.laserliner.com/info



AC-tiveFinder



SERVICE  

Umarex GmbH & Co KG

– Laserliner –

Möhnstraße 149, 59755 Arnsberg, Germany

Tel.: +49 2932 638-300, Fax: +49 2932 638-333

laserliner@umarex.de

083.010A / Rev.0610

Umarex GmbH & Co KG
Donnerfeld 2
59757 Arnsberg, Germany
Tel.: +49 2932 638-300, Fax: -333
www.laserliner.com



Laserliner[®]
Innovation in Tools